

Barrow House is an Urban Mausoleum and Grief Center in downtown Portland, Oregon. It combines a funeral home, traditional mausoleum (housing vessels and urns) and a grief counseling center which has options for both group and individual therapy. It presents the idea that a place for sadness and grief can also be a place for happiness and remembrance. The benefits of the combination come from creating a place that is a single, stable, and contemplative environment for users throughout death and grieving processes. Choosing an urban environment challenges the modern trend of developing burial sites outside of the city; by placing Barrow House downtown, it is more accessible physically and representationally, and serves as a symbol of a modernized attitude towards life and death. It asks people to confront and embrace death as part of the everyday. Furthermore, a combination of the terms “barrow,” an ancient burial ground, with “house,” suggests the creation of a new place for burial that is both familiar and approachable.

Basic Program Elements

Funerary Services:

Funerary Waiting Room & Entry, Funerary Offices, Office Meeting Room, Staff and Support Spaces (break, copy, etc), Farewell Room, Crematorium and Morgue

Funeral:

Funerary Gathering Spaces and Family Rooms

Grief Center:

Counseling Waiting Room, Counseling Center Gather Rooms, Counseling Center Private Offices, Staff and Support Spaces (break, copy, etc)

Mausoleum:

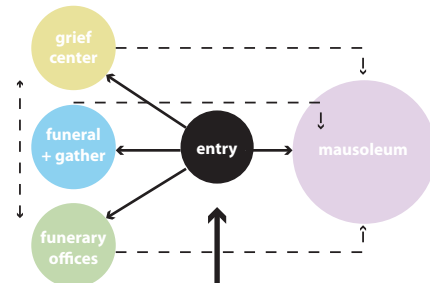
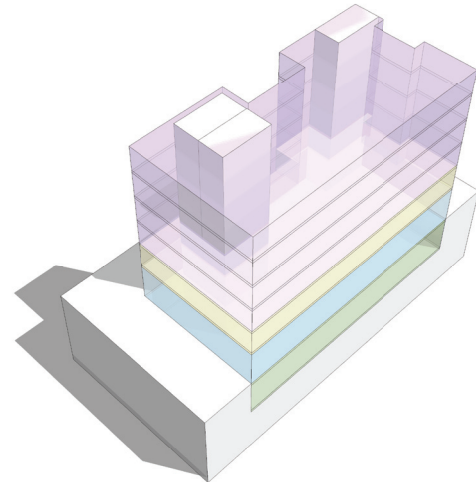
Mausoleum Niches, Contemplation Rooms and Memorial Spaces

General/Other:

Main Entry, Bathrooms, Circulation, Mechanical and Storage

Net Totals: 28,225 s.f.

Program Diagram



Parti Diagram

